



The theory component of the competition (including the championship) has been changed to be more educative and less intimidating to contestants. There is no reason any person wishing to update their knowledge can't use these questions and references.

Below is the master set of questions. Of these, 60 will be chosen at random and used at regional competitions and the championship.

The answers have not been provided below. It is the competitor's responsibility to research them. Links are provided to the relevant legislation, rules and codes.

List of land transport rules:

<https://www.nzta.govt.nz/resources/rules/>

Vehicle Dimensions and Mass rule related questions

<https://www.nzta.govt.nz/resources/rules/vehicle-dimensions-and-mass-2016/>

## SCHEDULE 2

According to Schedule 2 of the VDAM rule the overall length of a Towing vehicle, full trailer, pole trailer (excluding load) is:

A. 10.0m	B. 10.5m	C. 11.0m	D. 11.5m
----------	----------	----------	----------

According to Schedule 2 of the VDAM rule the overall length of a Rigid vehicle (not towing) is:

A. 12.0m	B. 12.2m	C. 12.6m	D. 13.0m
----------	----------	----------	----------

According to Schedule 2 of the VDAM rule the overall length of a Towing vehicle and semi-trailer is:

A. 19m	B. 20m	C. 21m	D. 22m
--------	--------	--------	--------

According to Schedule 2 of the VDAM rule the overall length of a Towing vehicle and full trailer excluding its load is:

A. 19m	B. 20m	C. 21m	D. 22m
--------	--------	--------	--------

According to Schedule 2 of the VDAM rule the maximum height of All vehicles is:

A. 4.25m	B. 4.275m	C. 4.3m	D. 4.35m
----------	-----------	---------	----------

According to note 4 attached to Schedule 2 of the VDAM rule the overall length of "A" is the maximum height calculation inclusive or exclusive of load restraining devices?

A. Inclusive	B. Exclusive	C. Neither
--------------	--------------	------------

According to Table 1.2 of the VDAM rule the maximum mass of two single large tyred axles in a twin steer set is:

A. 10,500kg	B. 10,800kg	C. 11,000kg	D. 11,200kg
-------------	-------------	-------------	-------------

According to Table 1.2 of the VDAM rule the maximum mass of two single mega tyred axles in a twin steer set is:

A. 10,500kg	B. 10,800kg	C. 11,000kg	D. 11,200kg
-------------	-------------	-------------	-------------

According to Table 1.2 of the VDAM rule what is the rear overhang for a Heavy rigid vehicle whose rearmost axle is a non-steering axle?

A. 5.0m or 80% of wheelbase (whichever is less)	B. 4.0m or 70% of wheelbase (whichever is less)	C. 4.0m or 70% of wheelbase (whichever is less)	D. 4.0 or 60% of wheelbase (whichever is less)
---	---	---	--

According to Table 1.2 of the VDAM rule what is the rear overhang for a Heavy rigid vehicle whose rearmost axle is a-steering axle?

A. 5.0m or 80% of wheelbase (whichever is less)	B. 4.25m or 70% of wheelbase (whichever is less)	C. 4.0m or 70% of wheelbase (whichever is less)	D. 4.0 or 60% of wheelbase (whichever is less)
---	--	---	--

According to Table 1.2 of the VDAM rule what is the rear overhang for a Heavy semi-trailer other than a Class TC caravan trailer?

A. 5.0m or 80% of wheelbase (whichever is less)	B. 4.30m or 50% of wheelbase (whichever is less)	C. 4.0m or 70% of wheelbase (whichever is less)	D. 4.0 or 60% of wheelbase (whichever is less)
---	--	---	--

According to Table 1.2 of the VDAM rule what is the rear overhang for a heavy pole trailer with two axle sets?

A. 5.0m or 80% of wheelbase	B. 4.30m or 50% of wheelbase	C. 4.0m or 50% of wheelbase	D. 4.0 or 60% of wheelbase
-----------------------------	------------------------------	-----------------------------	----------------------------

(whichever is less)	(whichever is less)	(whichever is less)	(whichever is less)
---------------------	---------------------	---------------------	---------------------

According to Table 1.2 of the VDAM rule what is the rear overhang for a Heavy full trailer?

A. 5.0m or 80% of wheelbase (whichever is less)	B. 4.30m or 50% of wheelbase (whichever is less)	C. 4.0m or 50% of wheelbase (whichever is less)	D. 4.0 or 60% of wheelbase (whichever is less)
---	--	---	--

According to Table 1.2 of the VDAM rule what is the front overhang for a Semi trailer?

A. 2.0m radius arc ahead of the kingpin centre	B. 2.04m radius arc ahead of the kingpin centre	C. 2.0m radius arc ahead of the gooseneck	D. 2.04m radius arc ahead of the gooseneck
--	---	---	--

According to Table 1.2 of the VDAM rule what is the front overhang for a Simple trailer?

A. 2.0m radius arc ahead of the tow coupling centre	B. 2.04m radius arc ahead of the tow coupling centre	C. 2.0m radius arc from the coupling centre	D. 2.04m radius arc rearward of the coupling centre
---	--	---	---

According to Table 1.2 of the VDAM rule what is the front overhang for a Full trailer?

A. 2.0m radius arc ahead of the turntable centre	B. 2.04 radius arc ahead of the turntable centre	C. 2.0m radius arc from the coupling centre	D. 2.04m radius arc from the coupling centre
--	--	---	--

According to Table 1.2 of the VDAM rule what is the rear trailing unit distance for an A Train?

A. 13.0m	B. 13.5m	C. 14.0m	D. 14.5m
----------	----------	----------	----------

According to Table 1.2 of the VDAM rule what is the rear trailing unit distance for a B Train?

A. 13.0m	B. 13.5m	C. 14.0m	D. 14.5m
----------	----------	----------	----------

According to Table 1.2 of the VDAM rule what is the rear trailing unit distance for towing vehicle and two trailers?

A. 13.0m	B. 13.5m	C. 14.0m	D. 14.5m
----------	----------	----------	----------

According to Table 1.2 of the VDAM rule the tow coupling position for towing a heavy full trailer is?

A. 40% of wheelbase of towing vehicle	B. 45% of wheelbase of towing vehicle	C. 50% of wheelbase of towing vehicle	D. 55% of wheelbase of towing vehicle
---------------------------------------	---------------------------------------	---------------------------------------	---------------------------------------

According to Table 1.2 of the VDAM rule the tow coupling position for towing a simple trailer is?

A. At least 600 mm rearward of the rear axis of the towing vehicle and not more than a distance equal to 50% of wheelbase	B. At least 650 mm rearward of the rear axis of the towing vehicle and not more than a distance equal to 50% of wheelbase	C. At least 700 mm rearward of the rear axis of the towing vehicle and not more than a distance equal to 50% of wheelbase	D. At least 750 mm rearward of the rear axis of the towing vehicle and not more than a distance equal to 50% of wheelbase
---	---	---	---

Table 1.1B of the VDAM rule is effective from which date?

A. On and after 18 February 2017	B. On and after 18 February 2018	C. On and after 1 December 2017	D. On and after 1 December 2018
----------------------------------	----------------------------------	---------------------------------	---------------------------------

According to Table 1.1B of the VDAM rule the maximum mass on an individual single Standard tyres in a twin steer axle set, or in a tandem axle set is?

A. 5,500kg	B. 5,800kg	C. 6,000kg	D. 6,600kg
------------	------------	------------	------------

According to Table 1.1B of the VDAM rule the maximum mass on an individual single Large tyres in a twin-steer axle set or a quad-axle set is?

A. 5,500kg	B. 5,800kg	C. 6,000kg	D. 6,600kg
------------	------------	------------	------------

According to Table 1.1B of the VDAM rule the maximum mass on an individual single Large tyres in a tandem axle set with a single large-tyred axle or a single standard-tyred axle or in a tri-axle set is?

A. 5,500kg	B. 5,800kg	C. 6,000kg	D. 6600kg
------------	------------	------------	-----------

According to Table 1.1B of the VDAM rule the maximum mass on an individual single Mega tyre in a twin-steer axle set is?

A. 5,500kg	B. 5,800kg	C. 6,000kg	D. 6,600kg
------------	------------	------------	------------

According to Table 1.1B of the VDAM rule the maximum mass on an individual single Mega tyre in a single-steer axle set is?

A. 5,500kg	B. 5,800kg	C. 6,600kg	D. 7,200kg
------------	------------	------------	------------

According to Table 1.1B of the VDAM rule the maximum mass on an individual single Mega tyre in a quad axle set is?

A. 5,500kg	B. 5,800kg	C. 6,000kg	D. 6,600kg
------------	------------	------------	------------

According to Table 1.1B of the VDAM rule the maximum mass an individual single Mega tyre in a Tri axle set is?

A. 5,500kg	B. 5,800kg	C. 6,600kg	D. 7,000kg
------------	------------	------------	------------

In the definitions section of the VDAM rule: a single Large tyred axle has a manufacturer's designated tyre section width is?

A. 355mm and 444mm	B. 360mm and 444mm	C. 355mm and 490mm	D. 355mm and 444mm
--------------------	--------------------	--------------------	--------------------

In the definitions section of the VDAM rule: a single Mega tyred axle has a manufacturer's designated tyre section of?

A. 444mm or more	B. 360mm or more	C. 355mm or more	D. No more than 444mm
------------------	------------------	------------------	-----------------------

In the definitions section of the VDAM rule: a single Standard tyred axle has a manufacturer's designated tyre section of?

A. 444mm or more	B. 360mm or more	C. 355mm or more	D. No more than 355mm
------------------	------------------	------------------	-----------------------

In the definitions section of the VDAM rule "Front Overhang" for a rigid vehicle is measured from?

A. the centre of the tow coupling	B. the front edge of the driver's seat, when in the rearmost position	C. the rear edge of the driver's seat, when in the foremost position	D. The steering wheel in the rearmost position
-----------------------------------	---	--	--

In the definitions section of the VDAM rule "Front Overhang" for a semi trailer is measured from?

A. the centre of the kingpin	B. the rear axis	C. 300mm forward of the rear axis	D. The rear of the truck cab
------------------------------	------------------	-----------------------------------	------------------------------

In the definitions section of the VDAM rule "Front Overhang" for a full trailer is measured from?

A. The rear axis	B. The centre of the turntable	C. 300mm forward of the rear axis	D. From the tow coupling centre
------------------	--------------------------------	-----------------------------------	---------------------------------

In the definitions section of the VDAM rule "Front Overhang" for a simple trailer is measured from?

A. The rear axis	B. The centre of the front axle	C. 300mm forward of the rear axis	D. From the tow coupling centre
------------------	---------------------------------	-----------------------------------	---------------------------------

According to Table 1.4 of the VDAM rule a semi-trailer with four twin tyred axles in a quad axle set have a maximum mass of?

A. 18,000kg	B. 19,000kg	C. 20,000kg	D. 21,000kg
-------------	-------------	-------------	-------------

According to Table 1.4 of the VDAM rule a semi-trailer with four single large tyred axles in a quad axle set have a maximum mass of?

A. 18,000kg	B. 19,000kg	C. 20,000kg	D. 21,000kg
-------------	-------------	-------------	-------------

According to Table 1.4 of the VDAM rule a semi-trailer with four Mega tyred axles in a quad axle set have a maximum mass of?

A. 18,000kg	B. 19,000kg	C. 20,000kg	D. 21,000kg
-------------	-------------	-------------	-------------

According to Table 1.3 of the VDAM rule the maximum mass of a semi-trailer with three twin tyred oscillating axles with axle spacings more than 2m and less than 2.4m from the first to last axle is?

A. 15,000kg	B. 16,000kg	C. 17,000kg	D. 18,000kg
-------------	-------------	-------------	-------------

According to Table 1.3 of the VDAM rule the maximum mass of a semi-trailer with three twin tyred oscillating axles with axle spacings more than 2.4m and less than 2.5m from the first to last axle is?

A. 16,000	B. 16,500kg	C. 17,000kg	D. 17,500kg
-----------	-------------	-------------	-------------

According to Table 1.3 of the VDAM rule the maximum mass of a semi-trailer with three twin tyred oscillating axles with axle spacings more than 2.5m from the first to last axle is?

A. 15,000kg	B. 16,000kg	C. 17,000kg	D. 18,000kg
-------------	-------------	-------------	-------------

According to Table 2.1 of the VDAM rule if the distance from the centre of the first axle to the centre of the last axle exceeds 16.0m the allowable mass is?

A. 40,000kg	B. 42,000kg	C. 44,000kg	D. 46,000kg
-------------	-------------	-------------	-------------

According to Table 2.2 of the VDAM rule the maximum mass for heavy motor vehicles with 7 axles if the distance from the centre of the first axle to the centre of the last axle is 16.8m or more the maximum mass is?

A. 40,000kg	B. 42,000kg	C. 44,000kg	D. 45,000kg
-------------	-------------	-------------	-------------

According to Table 2.2 of the VDAM rule the maximum mass for heavy motor vehicles with 8 axles if the distance from the centre of the first axle to the centre of the last axle is 17.4m or more the maximum mass is?

A. 40,000kg	B. 42,000kg	C. 44,000kg	D. 46,000kg
-------------	-------------	-------------	-------------

According to Table 3.4 of the VDAM rule a HPMV semi-trailer with four twin tyred axles in a quad axle set has a maximum mass of?

A. 18,000kg	B. 19,000kg	C. 20,000kg	D. 22,000kg
-------------	-------------	-------------	-------------

According to Table 3.4 of the VDAM rule a HPMV semi trailer with four single large tyred axles in a quad axle set has a maximum mass of?

A. 18,000kg	B. 19,000kg	C. 20,000kg	D. 22,000kg
-------------	-------------	-------------	-------------

According to Table 3.4 of the VDAM rule a HPMV semi trailer with four Mega tyred axles in a quad axle set has a maximum mass of?

A. 18,000kg	B. 19,000kg	C. 20,000kg	D. 22,000kg
-------------	-------------	-------------	-------------

According to Table 3.3 of the VDAM rule the maximum mass of a HPMV semi trailer with three twin tyred oscillating axles with axle spacings more than 2m and less than 2.4m from the first to last axle is?

E. 15,000kg	F. 16,000kg	G. 18,000kg	H. 19,000kg
-------------	-------------	-------------	-------------

According to Table 3.3 of the VDAM rule the maximum mass of a HPMV semi trailer with three twin tyred oscillating axles with axle spacings more than 2.4m and less than 2.5m from the first to last axle is?

E. 16,000	F. 16,000kg	G. 18,000kg	H. 19,00kg
-----------	-------------	-------------	------------

According to Table 3.3 of the VDAM rule the maximum mass of a HPMV semi trailer with three twin tyred oscillating axles with axle spacings more than 2.5m from the first to last axle is?

E. 15,000kg	F. 16,000kg	G. 18,000kg	H. 19,000kg
-------------	-------------	-------------	-------------

According to Table 2.1 of the VDAM rule if the distance from the centre of the first axle to the centre of the last axle exceeds 16.0m the allowable mass is?

E. 40,000kg	F. 42,000kg	G. 44,000kg	H. 46,000kg
-------------	-------------	-------------	-------------

According to Part 4 of the VDAM rule the maximum mass for a HPMV with the distance 17.4m from the centre of the first axle to the centre of the last axle is?

E. 50,000kg	F. 52,000kg	G. 52,000kg	H. 56,000kg
-------------	-------------	-------------	-------------

In the VDAM rule Section Two relates to?

A. Responsibilities	B. Permits	C. Vehicle requirements	D. Mass Limits
---------------------	------------	-------------------------	----------------

In the VDAM rule Section Three relates to?

A. Responsibilities	B. Permits	C. Vehicle requirements	D. Mass Limits
---------------------	------------	-------------------------	----------------

In the VDAM rule Section Four relates to?

A. Responsibilities	B. Permits	C. Vehicle requirements	D. Mass Limits
---------------------	------------	-------------------------	----------------

In the VDAM rule Section Five relates to?

A. Responsibilities	B. Permits	C. Vehicle requirements	D. Mass Limits
---------------------	------------	-------------------------	----------------

In the VDAM rule Part 3 Schedule 3 relates to?

A. Over dimension requirements	B. Mass limits	C. Dimension requirements	D. Permit form
--------------------------------	----------------	---------------------------	----------------

In the VDAM rule Part 3 Schedule 4 relates to?

A. Over dimension requirements	B. Mass limits	C. Dimension requirements	D. Permit form
--------------------------------	----------------	---------------------------	----------------



In the VDAM rule Part 3 Schedule 6 relates to?

A. Over dimension requirements	B. Mass limits	C. Dimension requirements	D. Permit form
--------------------------------	----------------	---------------------------	----------------

In the VDAM rule Part 3 Schedule 2 relates to?

A. Over dimension requirements	B. Mass limits	C. Dimension requirements	D. Permit form
--------------------------------	----------------	---------------------------	----------------

Worktime and logbooks rule 2007 related questions

<https://www.nzta.govt.nz/resources/rules/work-time-and-logbooks-2007-index/>

According to the definitions section of the worktime and logbooks rule a Cumulative work period means a set of cumulative work days between continuous periods of rest time of at least how many hours?

A. 24	B. 70	C. 10	D. 36
-------	-------	-------	-------

According to the definitions section of the worktime and logbooks rule a Cumulative work day means?

a period:

- (a) during which work occurs; and
- (b) that:
  - (i) does not exceed 24 hours; and
  - (ii) begins after a continuous period of rest time of at least HOW MANY HOURS?

A. 24	B. 70	C. 10	D. 36
-------	-------	-------	-------

According to the Definitions section of the Worktime and Logbooks rule which of these is not included in the definition of "Rest Time"? All time that:

A. is not work time	B. is all time that is spent at home	C. is at least 30 minutes in duration	D. is not spent in a moving vehicle associated with work
---------------------	--------------------------------------	---------------------------------------	--

According to Part 4 of the of the worktime and logbooks rule Work "Start Time" begins? (check whichever apply)

A. Either when paid employment begins	B. Either when you enter the workplace	C. or when driving a vehicle subject to work time requirements commences – whichever is earliest	D. and you place an entry in your logbook
---------------------------------------	--	--	---

According to Part 4 of the of the worktime and logbooks rule Work "Finish Time" is? (check whichever apply)

A. Either when paid employment ends	B. Either when you leave the workplace	C. <i>or</i> when driving a vehicle subject to work time requirements finishes – <i>whichever is latest</i>	D. and you place your last entry in your logbook
-------------------------------------	--	---	--

Section 2.1 of the worktime and logbooks rule references Section 30 ZC of the Land Transport Act:

[www.legislation.govt.nz/act/public/1998/0110/latest/DLM433613.html?search=ta\\_act\\_L\\_ac%40ainf%40anif\\_an%40bn%40rn\\_200\\_a&p=1](http://www.legislation.govt.nz/act/public/1998/0110/latest/DLM433613.html?search=ta_act_L_ac%40ainf%40anif_an%40bn%40rn_200_a&p=1)

According to 30ZC of the Land Transport Act:

In any cumulative work day, a driver may not exceed how many hours of Work Time?

A. 11	B. 12	C. 13	D. 14
-------	-------	-------	-------

According to 30ZC of the Land Transport Act in any cumulative work day, a driver must have at **least** how many hours' rest?

A. 8	B. 10	C. 12	D. 14
------	-------	-------	-------

According to 30ZC of the Land Transport Act in any cumulative work period, a driver may not exceed how many hours of work time?

A. 24	B. 70	C. 10	D. 36
-------	-------	-------	-------

According to Section 30ZH of the Land Transport Act a driver required to obey worktime and logbook requirements must retain a logbook for how long after the date of the last entry in that logbook?

A. 24 months	B. 3 Working weeks	C. 12 months	D. 36 months
--------------	--------------------	--------------	--------------

According to Section 30ZH of the Land Transport Act a driver who is an employee must deliver a copy of each completed logbook record to their employer within how many days after completing that record?

A. 3 days	B. 14 days	C. 28 days	D. 7 weeks
-----------	------------	------------	------------

According to Section 30ZH of the Land Transport Act a driver who is an employee must deliver a copy of each completed logbook record to their employer within how many days after completing that record?

A. 3 days	B. 14 days	C. 28 days	D. 7 weeks
-----------	------------	------------	------------

According to Section 30ZH of the Land Transport Act the employer must retain the copy of each logbook record for a period of how long from the date of the record.

A. 14 days	B. 36 months	C. 12 months	D. 7 weeks
------------	--------------	--------------	------------

Carriage of Goods Act related questions contained in the Contracts and Commercial Law Act (2017)

<http://www.legislation.govt.nz/act/public/2017/0005/21.0/DLM6844033.html>

Clause 248 of the Contracts and Commercial Law Act relates to?

A. Contracts of successive carriage by air	B. Kinds of contract of carriage	C. Liability of contracting carrier	D. Liability of actual carrier
--	----------------------------------	-------------------------------------	--------------------------------

According to Clause 260 of the Contracts and Commercial Law Act one of the circumstances that a carrier is not liable for the loss of or damage to goods occurring while he is responsible for them under a contract of carriage is?

A. If the freight catches fire through no fault attributable to the carrier	B. In the event that freight or products are stolen or misappropriated	C. If saving or attempting to save life or property in peril	D. The freight conveyance encounters mechanical mishap
---	--	--	--

According to clause 248 of the Contracts and Commercial Law Act which of the following is not a kind of contract for carriage?

A. at owner's risk	B. limited carrier's risk	C. declared terms	D. Employee risk
--------------------	---------------------------	-------------------	------------------

According to Clause 259 of the Contracts and Commercial Law Act what is the Limitation of amount of carrier's liability?

A. \$1,500	B. \$1,750	C. \$2,000	D. \$2,500
------------	------------	------------	------------

Road User rule related questions

<https://www.nzta.govt.nz/resources/rules/road-user-2004-index/>

Part 4 of the Land Transport (Road User) Rule 2004 relates to?

A. Traffic signs and signals	B. Traffic signs and signals	C. Stopping and giving way	D. Stopping and parking
------------------------------	------------------------------	----------------------------	-------------------------

According to 6.10(1)(a) of the Road User rule a driver or person in charge of a vehicle must not stop, stand, or park the vehicle within how far of a fire hydrant?

A. 300mm	B. 400mm	C. 500mm	D. 1.5m
----------	----------	----------	---------

According to 6.18(1) of the Road User rule a vehicle that exceeds what length must not be stopped, stood, or parked on a roadway during the hours of darkness, whether attended or unattended, at an angle to the direction of the roadway?

A. 5 metres	B. 6 metres	C. 7 metres	D. 8 metres
-------------	-------------	-------------	-------------

According to 7.3(A) of the Road User rule may a driver terminate a telephone call while driving a vehicle?

A. Yes	B. No
--------	-------

According to 7.3(3)(A) of the Road User rule may a driver use a mobile phone to make a 111 or \*555 call while driving a vehicle?

A. Yes	B. No
--------	-------

VDAM permitting Manual 2015 related questions

<https://www.nzta.govt.nz/assets/resources/vdam-permitting-manual/VDAM-Permitting-Manual.pdf>

Which of these as described by the VDAM permitting manual in A1.1 is not one of the three types of VDAM permit?

A. Overweight	B. Defined route	C. Overdimension	D. HPMV
---------------	------------------	------------------	---------

According to A1.5 of the VDAM permitting manual must VDAM permits be carried in the vehicle during travel and be produced on demand to an enforcement officer or an operator of a pilot vehicle?

A. Yes	B. No
--------	-------

According to A1.6. of the VDAM permitting manual A HPMV trailer without roll stability control must have a minimum SRT rating of?

A. 0.35g	B. 0.37g	C. 0.40g	D. 0.42g
----------	----------	----------	----------

Section A3.2 of the VDAM permitting manual mentions two types of permit conditions. They are?

A. Critical and non-critical	B. Non-critical and categorical	C. Categorical and additional	D. Additional and critical
------------------------------	---------------------------------	-------------------------------	----------------------------

According to A3.2 of the VDAM permitting manual breaches of the two permit conditions are?

A. \$370 and \$1,500	B. \$370 and \$2,000	C. \$500 and \$1,500	D. \$500 and \$2,000
----------------------	----------------------	----------------------	----------------------

Section A3.2 of the VDAM permitting manual is a replica of limits expressed in the offences and penalties regulations. The weighing tolerance for gross mass is?

E. 500kg	F. 1,000kg	G. 1,500kg	H. 2,000kg
----------	------------	------------	------------

Section A3.2 of the VDAM permitting manual is a replica of limits expressed in the offences and penalties regulations. The weighing tolerance for an individual axle is?

A. 500kg	B. 1,000kg	C. 1,500kg	D. 2,000kg
----------	------------	------------	------------

Section A3.2 of the VDAM permitting manual is a replica of limits expressed in the offences and penalties regulations. The weighing tolerance for a twin steer set is?

A. 500kg	B. 1,000kg	C. 1,500kg	D. 2,000kg
----------	------------	------------	------------

Section A3.2 of the VDAM permitting manual is a replica of limits expressed in the offences and penalties regulations. The weighing tolerance for an axle set other than a twin steer set is?

A. 500kg	B. 1,000kg	C. 1,500kg	D. 2,000kg
----------	------------	------------	------------

Section A3.2 of the VDAM permitting manual is a replica of limits expressed in the offences and penalties regulations. The weighing tolerance for an axle group is?

A. 500kg	B. 1,000kg	C. 1,500kg	D. 2,000kg
----------	------------	------------	------------

According to A3.2. of the VDAM permitting manual If an infringement notice for overloading has been issued, the vehicle is allowed to continue its travel unless a mass limit on the permit has been exceeded by more than?

A. 10%	B. 20%	C. 25%	D. 30%
--------	--------	--------	--------



Truck Loading Code related questions

<http://www.nzta.govt.nz/assets/resources/roadcode/truck-loading-code/docs/tlc.pdf>

According to figure 3 of the truck loading code if a load is loaded against a headboard and has at least 150mm supported the minimum restraint required is?

A. Combined lashing strength of at least 1 x the load mass	B. Combined lashing strength of at least 1.5 x the load mass	C. Combined lashing strength of at least 2 x the load mass	D. Combined lashing strength of at least 5 x the load mass
--	--	--	--

According to page 10 of the truck loading code the rated strength for chains and steel wire ropes, must be?

A. Equivalent to not more than the specified minimum breaking force	B. Equivalent to not more than the specified maximum breaking force	C. Equivalent to more than 1.5 times the specified minimum breaking force	D. Equivalent to more than 3 times the specified minimum breaking force
---	---	---	---

According to page 10 of the truck loading code for webbings and other ropes, the rated (assembly) strength must be

A. equivalent to not more than twice the breaking strength	B. Equivalent to not more than half the breaking strength	C. equivalent to not more than three times the breaking strength	D. equivalent to not more than five times the breaking strength
--	---	--	---

According to page 18 of the truck loading code what standard should ropes preferably be manufactured and supplied in accordance with?

A. UNECE 32	B. NZS 5444	C. AS/NZS 4345	D. BS 2288
-------------	-------------	----------------	------------

Page 20 of the truck loading code suggests those responsible for the purchase of wire rope and fittings for use in load restraint systems should ensure that they comply with which standard?

A. UNECE 32	B. AS 3569 or BS 302	C. AS/NZS 4345	D. BS 2288
-------------	----------------------	----------------	------------

Page 20 of the truck loading code stipulates all chains must comply with which standards?

A. AS/NZS 4344 or BS 4942	B. AS 3569 or BS 302	C. AS/NZS 4345	D. BS 2288
------------------------------	-------------------------	----------------	------------

Page 33 of the truck loading code suggests that two-hundred litre drums on wooden pallets must only be carried on vehicles equipped with headboards. True or False?

A. True	B. False
---------	----------

Page 45 of the truck loading code suggests that all gas cylinders being transported by road should always be fitted with a valve cap or suitable guard. True or False?

A. True	B. False
---------	----------

Page 64 of the truck loading code notes the requirement that load anchorage points must comply with the requirements of which standard?

A. UNECE 32	B. NZS 5444	C. AS/NZS 4345	D. BS 2288
-------------	-------------	----------------	------------

Page 64 of the truck loading code recommends the number of anchorage points fitted and used and their strength must be equal to the securing device being used, and should be at least as strong as the securing device. True or False?

A. True	B. False
---------	----------

Land transport (Offences and penalties) regulations related questions

<http://www.legislation.govt.nz/regulation/public/1999/0099/latest/DLM280187.html>

According to Schedule 1A of the offences and penalties regulations the weighing tolerance for an individual axle is?

A. 500kg	B. 800kg	C. 1,000kg	D. 1,500kg
----------	----------	------------	------------

According to Schedule 1A of the offences and penalties regulations the weighing tolerance for any twin steer axle set is?

A. 500kg	B. 800kg	C. 1,000kg	D. 1,500kg
----------	----------	------------	------------

According to Schedule 1A of the offences and penalties regulations the weighing tolerance for a single vehicle that is not part of a combination vehicle, for any weight recorded or calculated on all axles of that vehicle is?

A. 500kg	B. 800kg	C. 1,000kg	D. 1,500kg
----------	----------	------------	------------

According to Schedule 1A of the offences and penalties regulations the weighing tolerance for a combination vehicle, for any weight recorded or calculated on all axles of that combination vehicle is?

A. 500kg	B. 800kg	C. 1,000kg	D. 1,500kg
----------	----------	------------	------------

According to Schedule 1B of the offences and penalties regulations if the axle weight recorded or calculated, reduced by the appropriate amount specified in clause 5, exceeds the maximum permitted weight on the axle by not more than 500kg the infringement fee for that axle is?

A. \$100	B. \$350	C. \$500	D. \$900
----------	----------	----------	----------

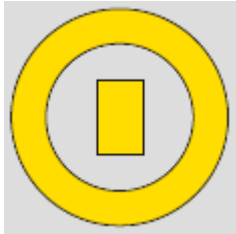
According to Schedule 1B of the offences and penalties regulations if the axle weight recorded or calculated, reduced by the appropriate amount specified in clause 5, exceeds the maximum permitted weight on the axle by more than 1 000 kg but not more than 1 500 kg the infringement fee for that axle is?

A. \$100	B. \$350	C. \$500	D. \$900
----------	----------	----------	----------

Road code related questions

<https://www.nzta.govt.nz/resources/roadcode/>

## Signs/diagrams



What does this signal mean?

A. Charging outlet for electric and hybrid vehicles	B. No parking, except for buses	C. Bus lane ahead	D. Fire hydrant
---	---------------------------------	-------------------	-----------------



When coming up to a roundabout you must give way to all vehicles that will cross your path from your left. True or False?

A. True	B. False
---------	----------



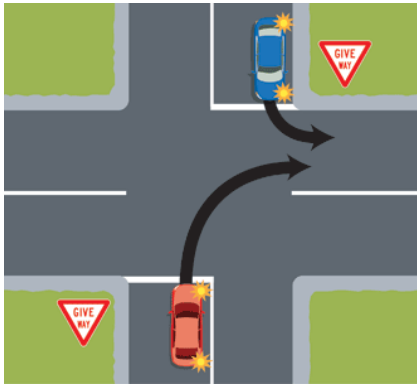
What does this sign mean?

A. Turn left now	B. Do a u-turn, but only to the left	C. Keep left
------------------	--------------------------------------	--------------



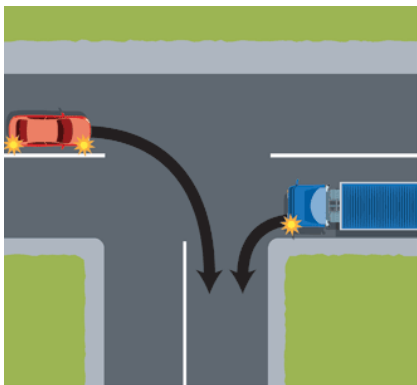
What does this sign mean?

A. Traffic lights are not working	B. Shooting range ahead	C. Airport runway ahead	D. Stop on request ahead
-----------------------------------	-------------------------	-------------------------	--------------------------



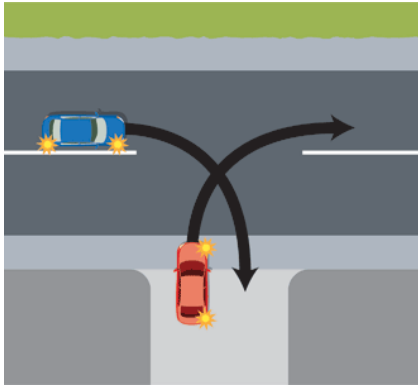
Which vehicle must give way?

A. Red car	B. Blue car
------------	-------------



Which vehicle must give way?

A. Red car	B. Blue truck
------------	---------------



Which vehicle must give way?

A. Red car	B. Blue car
------------	-------------

What does a white diamond painted on the road mean?

A. There is a crest in the road	B. You are approaching a school entrance	C. The speed limit is about to change	D. You are approaching a pedestrian crossing
---------------------------------	--	---------------------------------------	--



You are the driver of the blue car. Of the four hazards marked, which one is most likely to require you to take urgent action?

A. The cyclist	B. The car parked on your side of the road	C. The car coming towards you	D. The pedestrian on the opposite footpath
----------------	--	-------------------------------	--



What does this sign mean?

A. 35 car parks on the left	B. A corner in 35 metres	C. The recommended speed for this corner is 35kph
-----------------------------	--------------------------	---



What does this sign mean?

A. Tunnel	B. Roundabout	C. Tornado or whirlwind danger
-----------	---------------	--------------------------------

What colour are Temporary Warning Signs?

A. Blue	B. Green	C. Orange	D. red and White
---------	----------	-----------	------------------

What colour is a Compulsory sign?

A. White, black writing, with a black border	B. Green and white	C. White, black writing with a red border
--	--------------------	---

Pictorials/general knowledge questions



What type of rim is this commonly known as?

A. Tubeless	B. Split	C. Concentric	D. Hammer on
-------------	----------	---------------	--------------



What size is the kingpin on the right?

A. 40mm	B. 50mm	C. 90mm	D. 95mm
---------	---------	---------	---------



How many speeds does this Roadranger gearbox have?

A. 9	B. 12	C. 15	D. 18
------	-------	-------	-------





How many compliant ferry tie downs are fitted to the side of this vehicle?

A. 2	B. 4	C. 8	D. 12
------	------	------	-------

Approximately how many heavy trucks are currently registered in New Zealand?

A. 80,000	B. 115,000	C. 225,000	D. 850,000
-----------	------------	------------	------------



The common name for this wheel/rim attachment type is?

A. Artillery	B. 10 Stud	C. 8 Stud	D. Spigot mount
--------------	------------	-----------	-----------------

Wheel nuts must be torqued when replacing a wheel. What is the recommended maximum distance that should be covered before re-checking their tension?

A. 10km	B. 100km	C. 500km	D. 1000km
---------	----------	----------	-----------

True or false? Numerous studies around the world confirm that Electronic Stability Control (ESC) is highly effective in helping the driver maintain control of the vehicle or combination, thereby saving lives and reducing the severity of crashes

A. True	B. False
---------	----------

The 2016 road toll was?

A. 186	B. 258	C. 295	D. 328
--------	--------	--------	--------



This brake chamber is about to be fitted to a truck. The black painted part controls the?

A. Service brake	B. Emergency brake	C. Suspension height	D. Air tank pressure
------------------	--------------------	----------------------	----------------------

What diameter is 19inch rim?

A. 17.5 inches	B. 19 inches	C. 19.5 inches	D. 22.5 inches
----------------	--------------	----------------	----------------

What does a tachometer measure?

A. Altitude	B. Vehicle position	C. Engine speed	D. Vehicle speed
-------------	---------------------	-----------------	------------------